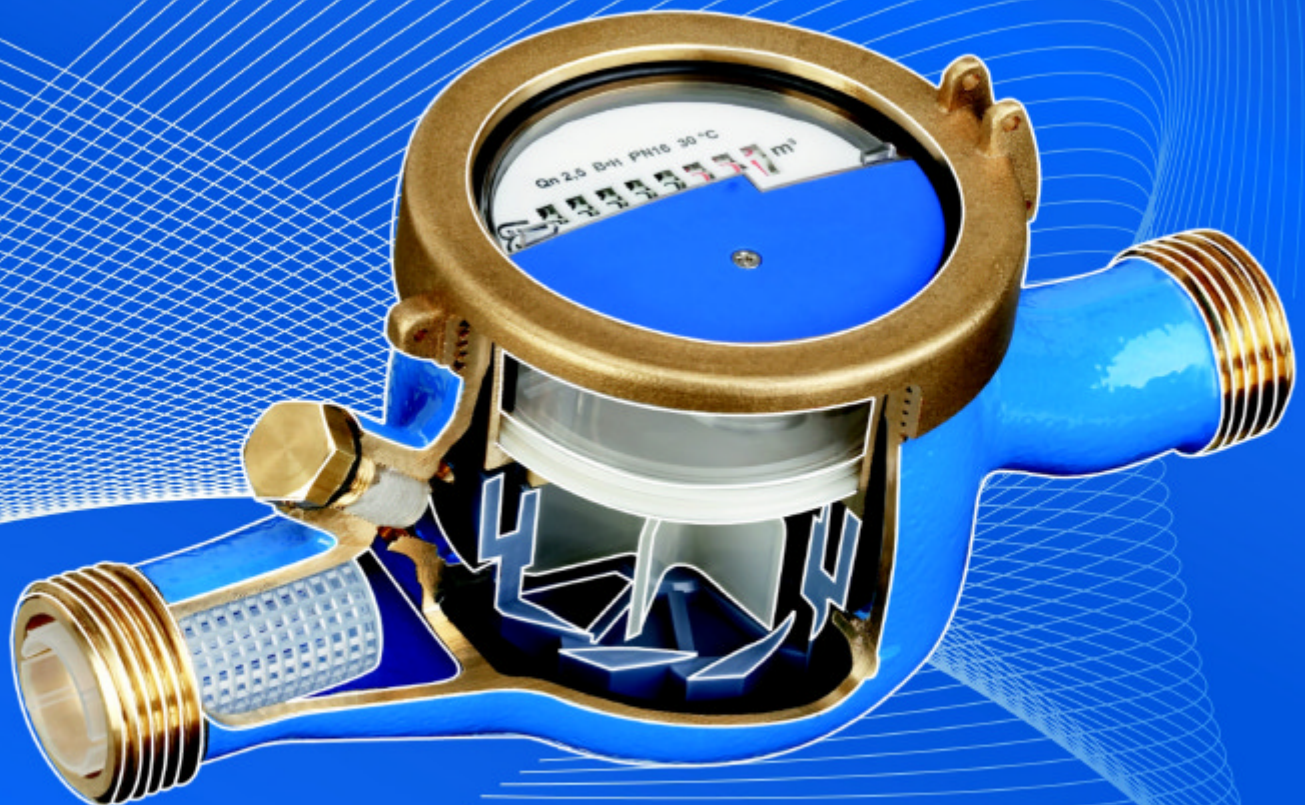


WATER METERS

Multi-jet dry-rotor version meters

- For cold and warm water
- Nominal flow 1.5 - 2.5 m³/h
- Horizontal and vertical fitting
- Optionally, with Modularis totalizer or contact maker



MULTI-JET DRY-ROTOR VERSION METERS FROM WEHRLE ARE FAMOUS FOR THEIR OUTSTANDING SERVICEABILITY



- ① Totalizer
- ② Register box
- ③ Ribbed baffle plate
- ④ Impeller wheel
- ⑤ Impeller chamber

Wehrle multi-jet dry-rotor version meters are characterized by extreme functionality, excellent workmanship and reliability.

Their housings are corrosion-resistant and are in accordance with the applicable standards. They are available untreated, painted or electrostatically powder-coated as required.

Multi-jet dry-rotor version meters dispose of a fine adjustment. Their measurement results are extremely reliable also in the case of more heavily soiled water.

The totalizer of the dry-rotor version meter is waterproof encapsulated and therefore cannot be contaminated.

Depending on the model, the meters are produced with 5 or 8 digit totalizers and are available for temperatures of up to 30 °C (MTK, multi-jet dry-rotor version meter for cold water) or up to 90 °C (MTW, multi-jet dry-rotor version meter for warm water). The maximum pressure load is 16 MPa.

The dial faces, stick-on labels and protective covers can be printed individually as the customer desires.

The meters can be supplied for installation in ascending and downflow piping as well as for horizontal mounting; the latter can also be supplied with flange.

Multi-jet dry-rotor version meters meet all demands of the PTB (Federal Physicotechnical Institution) as well as EU regulations. Numerous international approvals have been granted.

Best equipped for modern meter communication are the multi-jet dry-rotor version meters with Modularis totalizers and the meters with contact makers. Using these intelligent solutions, integration into any remote-reading system is not only simple but they can also be retrofitted at any time.

Naturally, our measuring inserts are also available separately.

VARIATIONS



Multi-jet meters Standard MTK-HWV with 5-digit totalizer and MTW-HWV with 8-digit totalizer

MULTI-JET METER STANDARD

- Metrological class B (R80)
- Metrological class C (R160) possible with cold water
- Totalizer protected by separate dry and wet areas
- Pivotal 5- and/or 8-digit totalizers
- Long working life, thanks to the use of top-quality materials
- Individual print at customer's request
- Housing in natural brass, powder-coated or painted



Multi-jet meters Modularis MTK-HWX and MTW-HWX with modules added

MULTI-JET METER MODULARIS

The innovative solution for modern water meter communication:

- Ready for integrating into any remote reading system
- 8-digit totalizer with modulation indicator
- Resolution 1 litre
- Can be retrofitted with the following electronic modules:
- Modularis pulse generator, S0 DIN 43864 or reed compatible
- Modularis M-bus according to European Standard EN 1434-3
- Modularis radio-controlled, frequency 868 MHz or 433 MHz



Multi-jet measuring insert with contact totalizer MTK-OWK and meter for ascending piping MTW-SWK

CONTACT METER WITH REED

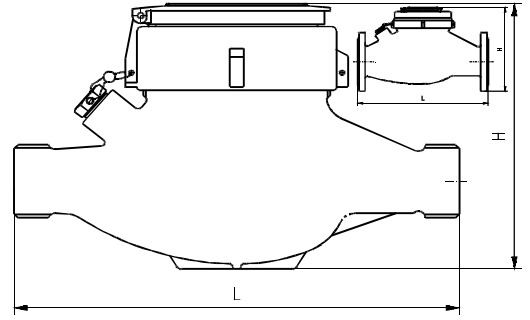
The contact meter is suitable in the best possible manner for electronic data collection. The contact exit can be connected to different measuring data systems.

- Standard pulse valency 10 litres/pulse
- Standard cable length 2 m
- Other pulse valencies and cable lengths on request.
- Direct switching voltage up to 200 V
- Switching current 500mA, switching time 0.5 ms
- Transition resistance 150 mOhm
- Capacity 0.2 pF

TECHNICAL DATA

PRODUCT DESCRIPTION

- MTK - ... = Multi-jet dry-rotor version meter for cold water
- MTW-... = Multi-jet dry-rotor version meter for warm water
- ...-HWV = Multi-jet meter Standard
- ...-HWX = Multi-jet meter Modularis
- ...-HWK = Multi-jet contact meter
- ...-SW. = Meter for ascending piping
- ...-FW. = Meter for downflow piping
- ...-OW. = Measuring insert



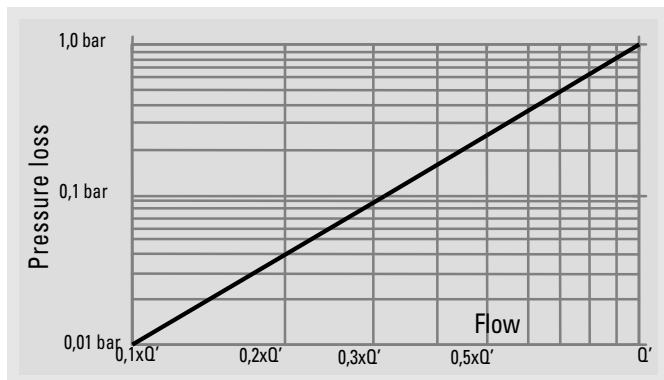
Dimensioned drawing multi-jet meters Standard and Modularis

Overall length L [mm]	165	190	260	260	260	300	300	105 ascending piping	105 ascending piping	150 ascending piping	150 ascending piping	150 ascending piping	105 downflow piping
Nominal flow Q ₃	2,5	4	6,3	10	10	16	25	2,5	4	6,3	10	16	4
Nominal flow Q _n	1,5	2,5	3,5	6	6	10	15	1,5	2,5	3,5	6	10	2,5
Nominal width [mm]	15	20	25	25	32	40	50	20	20	25	25	40	20
Start about [l/h]	< 10	< 13	< 18	< 23	< 45	< 45	< 45	< 15	< 15	< 18	< 18	< 38	< 38
Flow Q' at 1 bar pressure loss [l/h]	4500	5600	11000	12500	12500	24000	31000	5500	5500	12500	12500	26000	5500
Connecting thread	3/4"	1"	1 1/4"	1 1/4"	1 1/2"	2"	2 1/2" / F50	1"	1"	1 1/4"	1 1/4"	2"	1"
Height H about [mm]	104	108	120	120	120	143	155 / 162	150	150	170	170	215	150
Weight about [Kg]	1,4	1,6	2,4	2,4	2,4	4,8	6,9 / 9,6	1,8	1,8	2,9	2,9	5,4	2,1
Achievable metrological class MTK	A-H R160H/R50V	B-H/A-V R160H/R50V	B-H R160H/R50V	C-H R160H/R50V		B-H R160H/R50V		A-H R160H/R50V	B-H R160H/R50V		C-H R160H/R50V	B-H R160H/R50V	
Achievable metrological class MTW	A-H R160H/R50V	B-H R160H/R50V	A-H R160H/R50V	B-H R160H/R50V		R160H/R50V			B-H R160H/R50V	R160H/R50V	B-H R160H/R50V	R160H/R50V	
Order numbers													
MTK -.WV B	98-0045	98-0046	98-0094	98-0094	98-0094	98-0148	98-0222	98-0722	98-0413	98-0202	98-0414	98-0417	98-0578
MTW-.WV B	98-0237	98-0049	98-0095	98-0095	98-0095				98-0178		98-0179		98-0579
MTK -.WX B	98-0040	98-0041	98-0097	98-0097	98-0097	98-0099		98-0112	98-0112	98-0102	98-0102	98-0120	98-0103
MTW-.WX B	98-0042	98-0043	98-0098	98-0098	98-0098	98-0101			98-0122	98-0123	98-0123		98-0136
MTK -.WK	98-0259	98-0348	98-0243	98-0243	98-0243	98-0214	98-0368		98-0600	98-0202	98-0202	98-0200	98-1496
MTW-.WK	98-0207	98-0208	98-0218	98-0218	98-0218				98-0585	98-0181	98-0180		
MTK-.OWV	96-0055	96-0056	96-0097	96-0097	96-0097	96-0103	96-0103	96-0056	96-0056	96-0097	96-0097	96-0103	96-0055
MTW-.OWV	96-0068	96-0068	96-0098	96-0098	96-0098			96-0068	96-0068	96-0098	96-0098		96-0068
MTK-.OWX		96-0049	96-0050	96-0050	96-0050	96-0052	96-0052		96-0049	96-0050	96-0050	96-0052	96-0049
MTW-.OWX			96-0051	96-0051	96-0051	96-0053	96-0053			96-0051	96-0051	96-0053	
MTK-.OWK	96-0146	96-0146	96-0135	96-0135	96-0135	96-0142	96-0142	96-0146	96-0146	96-0135	96-0135	96-0142	96-0146
MTW-.OWK	96-0132	96-0132	96-0133	96-0133	96-0133	96-0134	96-0134	96-0132	96-0132	96-0133	96-0133	96-0134	96-0132

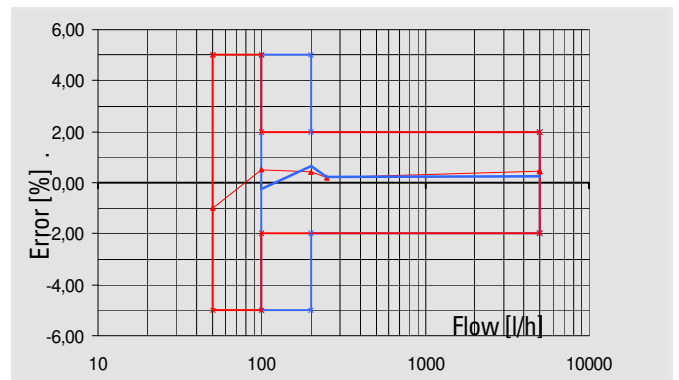
Data sheet Multi-jet dry-rotor version meter as at 2008-10-20/MDA

*Other overall lengths and metrological classes on request

Technical data and order numbers of Multi-jet meters



pressure loss graph



Typical error graph Classe C and Classe B