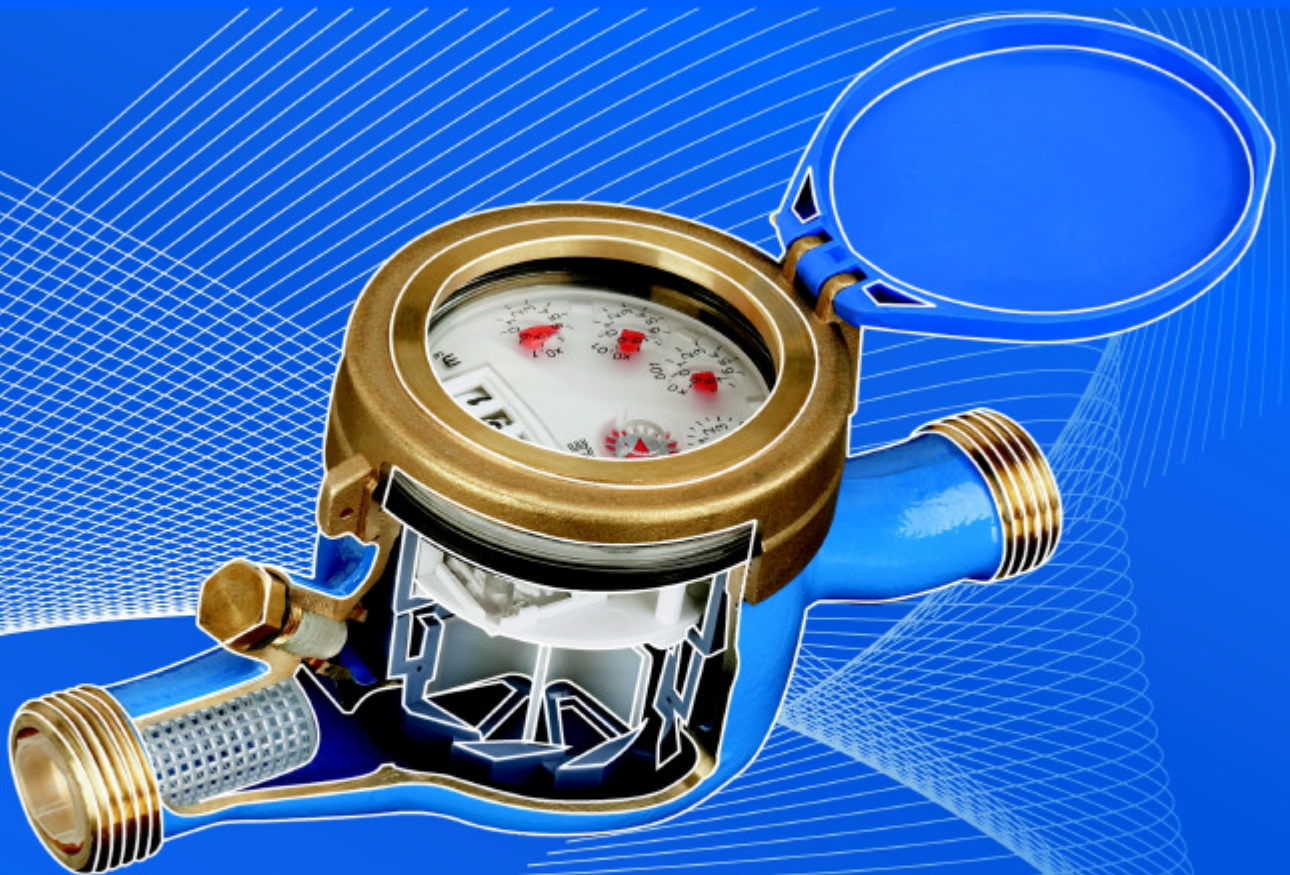


## **WATER METERS**

### Multi-jet wet-rotor version meters

- For cold water
- Nominal flow  $Q_n$  1.5 - 15 m<sup>3</sup>/h
- Horizontal and vertical fitting
- Optionally, for later equipping with contact maker



# YOU CAN RELY ON THE MULTI-JET WET-ROTOR VERSION METERS FROM WEHRLE



Exploded view of a multi-jet wet-rotor version meter (measuring insert).

- ① Totalizer
- ② Register box
- ③ Impeller wheel
- ④ Impeller chamber

Multi-jet wet-rotor version meters from Wehrle convince through their efficiency, absolutely dependable processing quality and reliability. The measuring inserts are flooded. This construction principle guarantees excellent and highly stable readings.

Multi-jet wet-rotor version meters are suitable for normal drinking water quality. For polluted water quality, the multi-jet wet-rotor version meters with patented integrated compensation are most suitable.

The meters can be supplied for horizontal, ascending and downflow piping with the relevant housing types.

Multi-jets for horizontal piping can also be supplied with flange connections for Qn 15 meters.

The housing is corrosion-resistant and in accordance with current standards. As desired, the housing can be supplied with either electrostatic powder coating, painted or untreated.

Multi-jet wet-rotor version meters are also available as cartridge meters for suitable housings.

Dial faces, stick-on labels and protective covers can be individually printed as the customer desires.

The maximum pressure load is 16 MPa.

Multi-jet wet-rotor version meters fulfill all demands of the PTB (German Federal Physical-Technical Office) as well as EU guidelines. Numerous international approvals have been issued.

Naturally, our measuring inserts are also separately available.

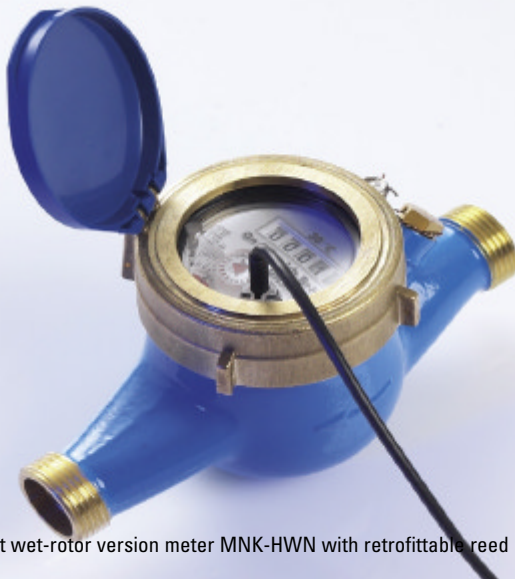
# VARIATIONS



Multi-jet wet-rotor version meter WVG MNK-HWV

## MULTI-JET METERS WVG

- Metrological class A (R40), B (R80) or C (R 160)
- 5-digit totalizer
- The use of top-quality materials guarantees a long service life.
- Housing in brass, natural or coated



Multi-jet wet-rotor version meter MNK-HWN with retrofittable reed contact

## MULTI-JET CONTACT METER

The contact meter is extremely well equipped for electronic data recording. The contact exit can be connected with various measuring data systems.

- Same characteristics as multi-jet meter WVG
- Suitable for retrofittable reed contact
- Standard pulse valency 100 litre/impulse
- Standard cable length 2 m
- Direct switching voltage up to 200 V
- Switching current 500 mA, response time 0.5 ms
- Transition resistance 150 mOhm
- Capacity 0.2 pF



Multi-jet wet-rotor version meter as cartridge meter MNKHPV

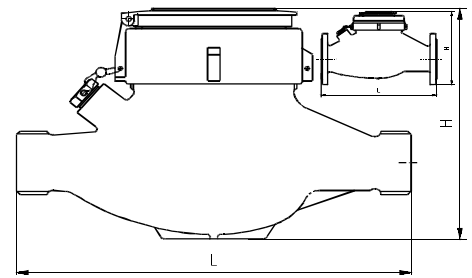
## MULTI-JET CARTRIDGE METER

- The housing is left in the pipe over several calibration periods.
- Cost-advantageous exchange of calibrated cartridges as well as backflow preventers with just a few simple means.
- Metrological classes A (R40), B (R80) or C (R160)
- 5-digit totalizer
- The use of top-quality materials guarantees long service life
- Housing in coated brass
- Retrofittable with reed sensor available as special design

# TECHNICAL DATA

## PRODUCT DESCRIPTION

- MNK -... = Multi-jet wet-rotor version meter for cold water
- ...-W. = WVG housing
- ...-P. = Cartridge meter
- ...-H.V = Multi-jet standard meter
- ...-H.N = Multi-jet meter for retrofitting
- ...-... CO = With compensation
- ...-S.. = Meter for ascending piping
- ...-F.. = Meter for downflow piping
- ...-O.. = Measuring insert



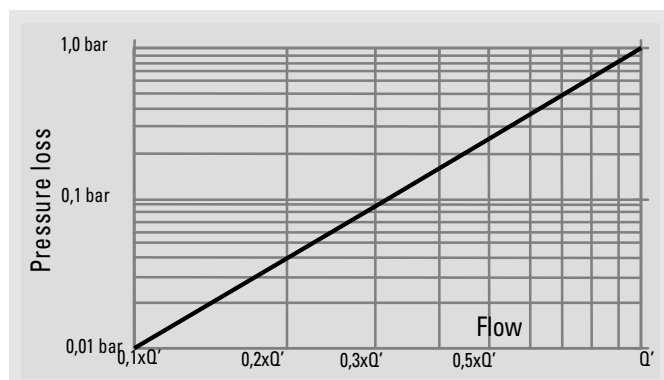
Dimensioned drawing of meter

Overall length L [mm]	165	190	260	260	260	270	300	105 Ascending piping	105 Ascending piping	150 Ascending piping	150 Ascending piping	105 Downflow piping
Nominal flow Q <sub>3</sub>	2,5	4	6,3	10	10	25	16	2,5	4	10	16	4
Nominal flow Q <sub>n</sub>	1,5	2,5	3,5	6	6	15	10	1,5	2,5	6	10	2,5
Nominal width [mm]	15	20	25	25	32	50	40	20	20	25	40	20
Start about [l/h]	< 10	< 13	< 23	< 23	< 45	< 45	< 45	< 15	< 15	< 18	< 20	< 38
Flow Q' at 1 bar pressure loss [l/h]	4500	5600	12500	12500	12500	31000	24000	5500	5500	12500	24000	5500
Connecting thread	3/4"	1"	1 1/4"	1 1/4"	1 1/2"	2 1/2" / F50	3/4"	1"	1"	1 1/4"	2"	1"
Height H about [mm]	104	108	120	120	120	155 / 162	143	150	150	160	185	150
Weight about [Kg]	1,4	1,6	2,4	2,4	2,4	6,9 / 9,6	4,8	1,8	1,8	2,9	5,4	2,1
Achievable metrological class MnK	C-H R160H	C-H/A-V R160H/R40V	C-H R80H	C-H R160H	C-H R160H	C-H R160H	C-H R160H	C-H R160H	C-H R160H	C-H R160H	C-H R160H	C-H R160H
Order Numbers												
MNK-.WV B	98-0050	98-0015	98-0093	98-0093	98-0093	98-0273	98-0483	98-0104	98-0104	98-1470	98-0177	98-0180
MNK-.WV CO B	98-0050	98-0015							98-0104			98-0180
MNK-.WN B	98-0010	98-0011										
MNK-.PV B	98-0402	98-0217						98-0262	98-0263			
MNK-.PN B	98-0205	98-0206										
MNK-.OWV	96-1164	96-1163	96-0094	96-0096	96-0096	96-0202	96-0202	96-1164	96-1163	96-0096	96-0202	96-1163
MNK-.OWV CO	96-1152	96-1253						96-1252	96-1253			96-1253
MNK-.OWN	96-0068	96-0068						96-0068	96-0068			96-0068
MNK-.OPV	96-0166	96-0125						96-0166	96-0125			
MNK-.OPN	96-0139	96-0137						96-0139	96-0137			

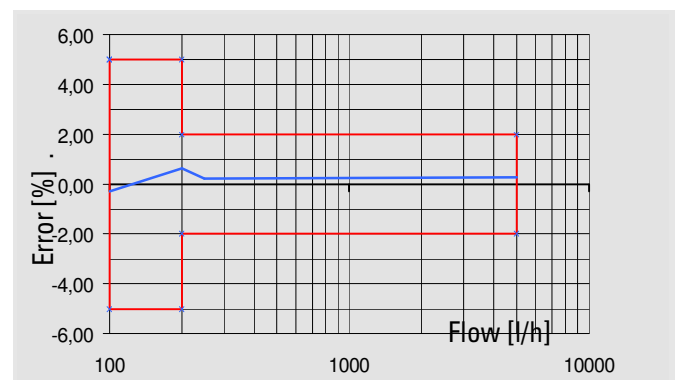
\*Additional overall lengths and metrological classes on request

Technical data and order numbers of the Multi-jet wet-rotor version meter

Data sheet Multi-jet wet-rotor version meter as at 2008-10-20/MDA



Pressure loss curve



Typical error curve