

## Ringkolvmätare Patron version MODULARIS RTK-HPX, RTK-SPX, RTK-OPX



Fig. visartavla RTK-HPX

Vår volymmätare i version patron MODULARIS för kallvatten garanteras bra mätresultat, tillförlitlighet och bra flexibilitet genom den utbytbara patronen.

- Förberedd för puls, M-bus och wireless M-bus
- Bygglängd 105 mm upp till 190 mm
- Nominelt flöde  $Q_3$  2,5 up to  $Q_3$  4
- MID mätinstrument noggrannhets class ( $Q_3/Q_1$ ) upp till R250
- Patronmätarens hus gjord i mässing
- Tryckklass (Bar) PN16
- Temperaturområde upp till 30 °C
- Täthetsklass IP64

# Piston Meter Cartridge Version MODULARIS

## RTK-HPX, RTK-SPX, RTK-OPX

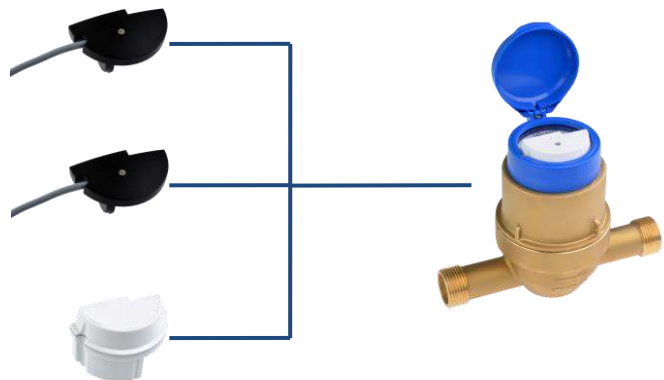
### REMOTE READOUT OPTIONS AMR – (Automatic Meter Reading)

#### MODULARIS-Module

Modularis Pulse Generator, S0, DIN 43864  
 alternatively with - 1 Litre per pulse  
                           - 10 Litres per pulse  
                           - 100 Litres per pulse

Modularis M-Bus module according  
 to EN 1434-3

Modularis Radio module, frequency range  
 433 MHz or 868 MHz (OMS)



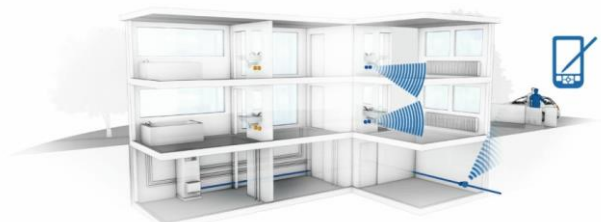
#### Retrofitting with Modularis Radio module

- Uni- or bidirectional transmission procedure
- Individually parameterizable
- Data recording via walk-by / drive-by
- Consumption data permanently stored
- Battery lifetime of up to 12 years
- Detection of rotation direction
- Manipulation detection



#### Maximum convenience through AMR walk-by / drive-by solution

- Recording and storage of consumption data  
 inside the radio module
- Reading of stored data via mobile reading  
 device



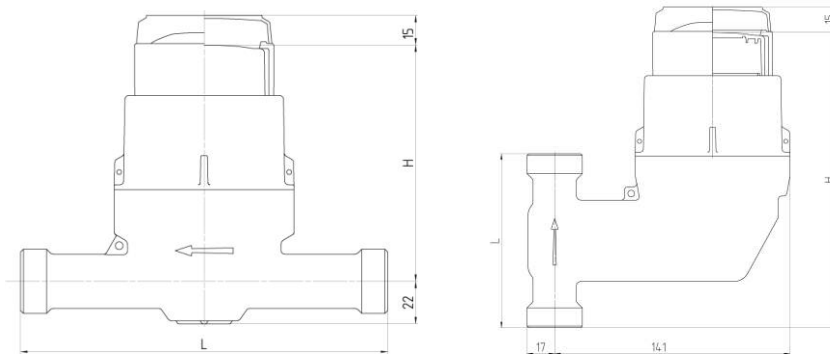
# Piston Meter Cartridge Version MODULARIS

## RTK-HPX, RTK-SPX, RTK-OPX

### TEKNISK SPECIFIKATION

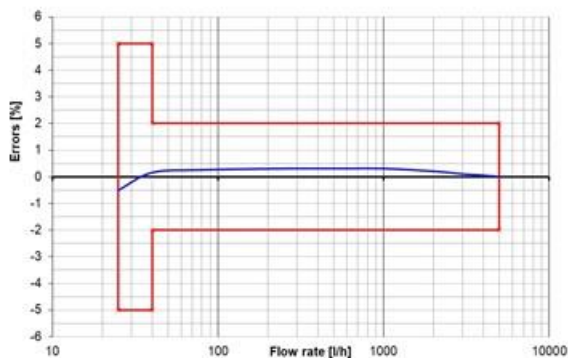
#### Modell

RTK- ... = Kallvatten från 0,1 °C up to +30 °C

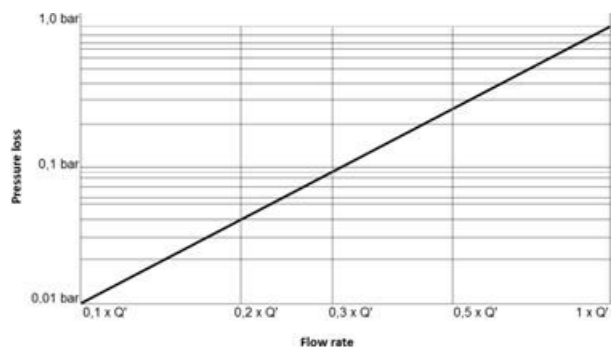


Installation	Modell	Längd* L i mm	Höjd H i mm (ca.)	Nominal flow Q <sub>3</sub> m <sup>3</sup> /h	Nominal width DN in mm	Gänga i tum	Start flöde** l/h	Flöde Q' 1 bar tryckfall vid l/h (ca.)	Vikt in kg (ca.)
horisontal	RTK-HPX	190	122	2,5	20	G 1 B	2	5000	1,8
horisontal	RTK-HPX	190	122	4	20	G 1 B	2	5000	1,8
vertikal	RTK-SPX	105	178	2,5	20	G 1 B	2	5000	2,1
vertikal	RTK-SPX	105	178	4	20	G 1 B	2	5000	2,1

Felvisnings diagram Q<sub>3</sub> 4 R160H



Tryckfalls diagram



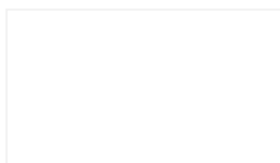
---

# Piston Meter Cartridge Version MODULARIS

## RTK-HPX, RTK-SPX, RTK-OPX

### TYPGODKÄNNANDE / CERTIFIKAT/ STANDARD

- EU-Type Examination Certificate according to 2014/32/EU (MID)
  - OIML R49
  - EN 14154
  - KTW / W270 (D)
- 



---

### VARIANTS



Fig. RTK-SPX (ascending pipe)



Fig. RTK-OPX (cartridge)